



Other ACMH Services

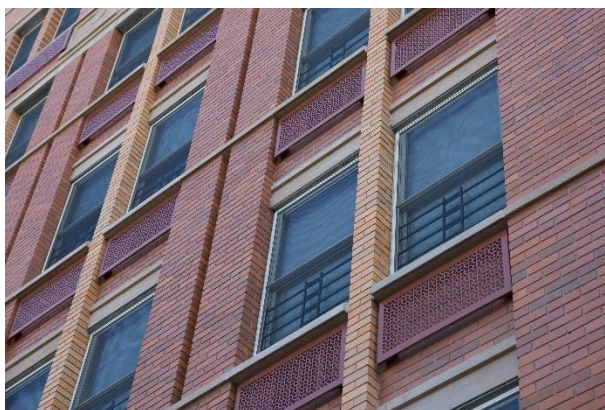
ACMH Care Management Services (CMS): assists adults to manage chronic mental health, substance use, and medical conditions. Care Management provides outreach, engagement, care coordination, and other warm-touch community interventions.

Critical Time Intervention: multidisciplinary mental health teams provide intensive outreach, engagement, care coordination and housing placement to homeless and hospitalized adults.

Assertive Community Treatment (ACT): mobile multidisciplinary mental health team offering treatment, rehabilitation, case management and support services in the Bronx.



Supportive Housing



To Make a Referral:

Transitional & Permanent Housing

Call 212-274-8558, ext. 215

Fax: 212-925-7958

Residential Crisis Support

Call 212-253-6377, ext. 406

Fax: 212-253-8679

www.acmhny.org



Supportive Housing

*Supportive, Transitional,
Residential Crisis Support*

Queens, Manhattan, the Bronx



ACMH, Inc. is a not-for-profit established in 1973, to promote the wellness and recovery of persons with mental illness living in New York City.

ACMH serves more than 2,000 individuals yearly.

ACMH services reduce hospitalization, incarceration and homelessness by facilitating increased participation in wellness self-management, engagement with outpatient care, and connection to social, peer and natural supports, education, and employment.

www.acmhny.org



Transitional Housing

Treatment Apartment Programs

licensed by the New York State Office of Mental Health (OMH) provide rehabilitative services in the home in leased apartments in Manhattan, Queens and the Bronx.

Transitional Community Residences:

- **Independence House** in Washington Heights
- **St Hilda's House** in Hamilton Heights
- **Garden House** in the East Village
- **Convent Avenue Residence** in Harlem
- **Sabra Goldman House** in Queens Village
- **74 Avenue A** in Queens Village



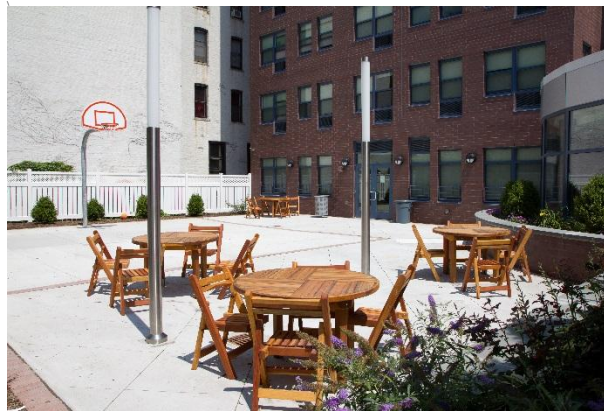
Supportive Housing

Supportive Apartment Programs

offer permanent housing with supportive case management in leased apartments throughout Manhattan, Queens and the Bronx.

Permanent Affordable Apartment Buildings

- **Markus Gardens** in Jamaica
- **E. 144th Street** in Mott Haven
- **Ana's House** in Morrisania
- **The Wilfrid** in Tremont
- **The Grand & Ryer Ave** in Mount Hope



ACMH's permanent apartment buildings include units for young adults, ages 18-25, promoting positive youth development, as well as affordable units for community households.



Priority for transitional and permanent housing is for those who are homeless or leaving hospitals, State psychiatric centers, or incarceration.

Residential Crisis Support

at locations in Washington Heights and the East Village, offers respite for guests experiencing a mental health crisis or transitioning from hospitalization in a home-like setting with round the clock peer support.



ACMH's services are person centered. Personal growth occurs with the support of staff skilled in evidence-based practices when clients choose goals important to them.